

Product Characteristics



The gatemotor swing door model pk400AC is one of the most compact and feasible model. Below consists some of its key features:

- Available for installing 2 openers with a single control box.
- Integrated mechanical limit switch that permits to eliminate the ground stops.
- Travel time protection, mechanical limit switch failure, travel time protection function to open standard 30 secs.
- soft start and slow stop function, mooth operation and low noise.
- automatic learning for remote control.
- keypad/single button interface.
- Alarm lamp, photo bream and safety beam interface.
- Manual releae fesign for emergency purpose.

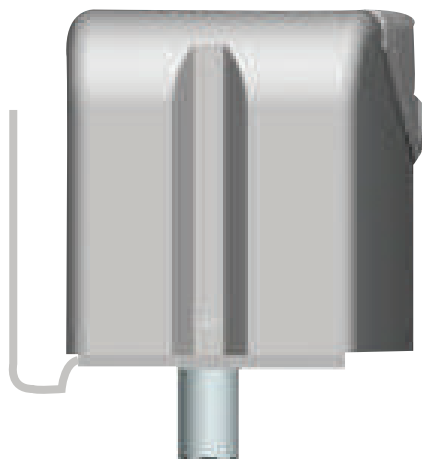
Main Technical Parameters

Unit Model	PK-400AC
Power supply	AC220V/50HzAC110V/60Hz
Maximum Loading Weight	800kg/LEAF
Motor Power	260W
Limit Switch	mechanical limit switch
Max. single leaf length	3.0m
Gate Moving Speed	9-11 degrees angle/sec
Remote Control Range	≥ 30m
Recording of Up Remotes	25
Remote Frequency	433.92MHz
Work Duty	s2 15min
Working Temperature	-20°C ~ 70°C
Package weight	Motor 26kg, control unit 2kg

Size of motor








358



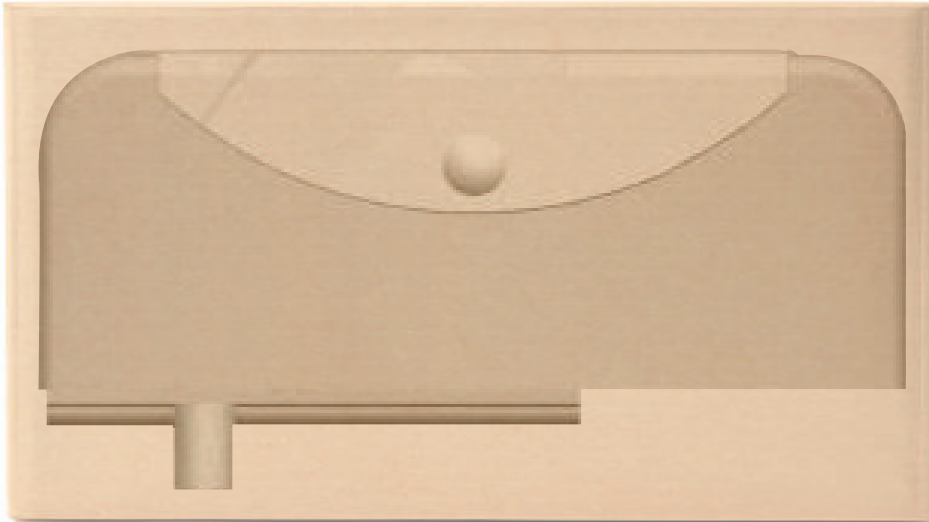
168

Accessories

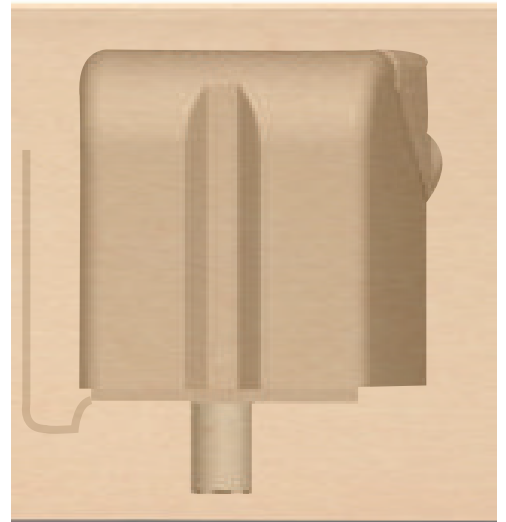
	<p>Remote (Included)</p> <p>Single button for open/close function.</p>
	<p>Photocell (IR Beam)</p> <p>Photocell use for detecting obstacle on moving condition, to ensure the safety of personnel and property.</p>
	<p>Flashlight 24V (Optional)</p> <p>When the gatemotor turns ON, the flashlight is activated as an indicator.</p>
	<p>Steel base plate (Optional)</p> <p>Used within the installation process of the gatemotor.</p>
	<p>Gear rack steel/Nylon</p> <p>The gear rack attaches to the side of the gate and with the teeth on the gear rack to move the gate open and close.</p>

	<p>Wireless wall switch</p> <p>This is used to open the gate while being inside the house.</p>
	<p>Control Board</p> <p>One of gatemotor's repair parts.</p>
	<p>Capacitor</p> <p>One of gatemotor's repair parts.</p>
	<p>Loop Wire</p> <p>Used in the installation of loop detector.</p>
	<p>Loop Detector</p> <p>Sensor for vehicle's presence.</p>

Package dimension



860



230

Additional Information

Net Weight

28KGS

Gross Weight

26KGS